

EMPAQUE TRI-CLAMP

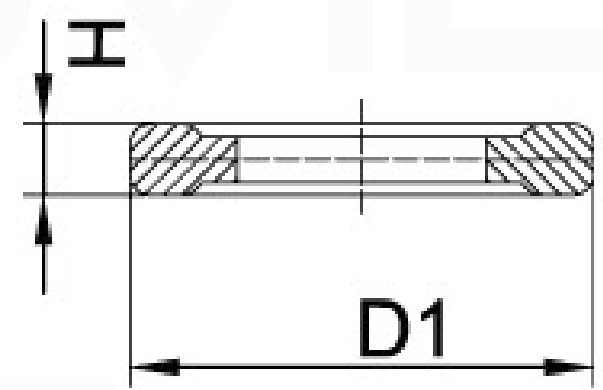
CATEGORIZACIÓN

Sellado Estático >
Empaques

ARANDELA DE ABRAZADERA 3A

Empaque

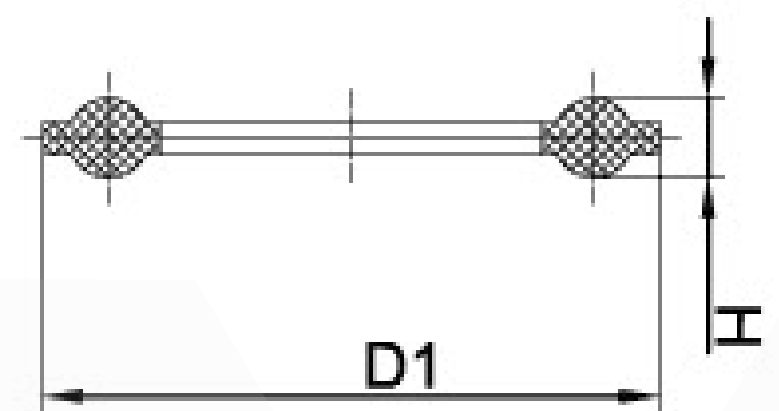
Tamaño	D1	H
1/2"	20.3	5
3/4"	20.3	5



SELLO DE ABRZADERA DIN

Empaque

Tamaño	D1	H
DN10	34	5
DN15	34	5
DN20	34	5
DN25	50.5	5
DN32	50.5	5
DN40	50.5	5
DN50	64	5.5
DN65	91	5.5
DN80	106	5.5
DN100	119	5.5
DN125	144.5	5.5
DN125	155	5.5
DN150	167	5.5
DN150	183	5.5
DN200	217.4	5.5
DN200	233.5	5.5
DN250	268	5.5
DN300	319	5.5



ANILLO DE SELLO DE LA ABRAZADERA (PULG.)

Empaque

Tamaño	D1	H
1"	50.5	5
1-1/2"	50.5	5
2"	64	5.5
2-1/2"	77.5	5.5
3"	91	5.5
3-1/2"	106	5.5
4"	119	5.5
4-1/2"	130	5.5
5"	144.5	5.5
Φ133	155	5.5
6"	167	5.5
Φ159	183	5.5
8"	217.4	5.5
Φ219	233.5	5.5
10"	268	5.5
12"	319	5.5

